

Goat Anti-ADAM12 Antibody
Peptide-affinity purified goat antibody
Catalog # AF1025a**Specification**

Goat Anti-ADAM12 Antibody - Product Information

| | |
|-------------------|--|
| Application | WB, IHC, E |
| Primary Accession | O43184 |
| Other Accession | NP_067673 , 8038 |
| Reactivity | Human |
| Host | Goat |
| Clonality | Polyclonal |
| Concentration | 0.5 mg/ml |
| Isotype | IgG |
| Calculated MW | 99542 |

Goat Anti-ADAM12 Antibody - Additional Information**Gene ID** 8038**Other Names**

Disintegrin and metalloproteinase domain-containing protein 12, ADAM 12, 3.4.24.-, Meltrin-alpha, ADAM12, MLTN

DilutionWB~~1:1000
IHC~~1:100~500
E~~N/A**Format**

0.5 mg IgG/ml in Tris saline (20mM Tris pH7.3, 150mM NaCl), 0.02% sodium azide, with 0.5% bovine serum albumin

Storage

Maintain refrigerated at 2-8°C for up to 6 months. For long term storage store at -20°C in small aliquots to prevent freeze-thaw cycles.

Precautions

Goat Anti-ADAM12 Antibody is for research use only and not for use in diagnostic or therapeutic procedures.

Goat Anti-ADAM12 Antibody - Protein Information**Name** ADAM12**Synonyms** MLTN

Function

Involved in skeletal muscle regeneration, specifically at the onset of cell fusion. Also involved in macrophage-derived giant cells (MGC) and osteoclast formation from mononuclear precursors (By similarity).

Cellular Location

[Isoform 1]: Cell membrane; Single-pass type I membrane protein [Isoform 3]: Secreted.

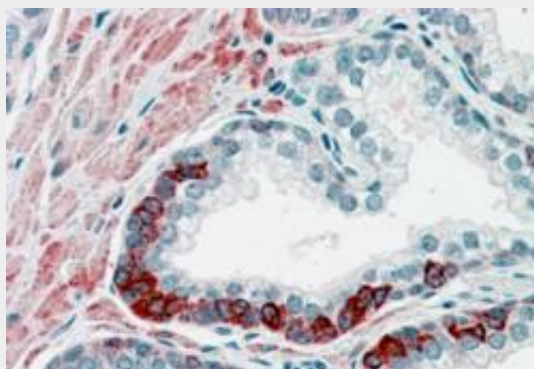
Tissue Location

Isoform 1 is expressed in placenta and skeletal, cardiac, and smooth muscle. Isoform 2 seems to be expressed only in placenta or in embryo and fetus. Both forms were expressed in some tumor cells lines. Not detected in brain, lung, liver, kidney or pancreas

Goat Anti-ADAM12 Antibody - Protocols

Provided below are standard protocols that you may find useful for product applications.

- [Western Blot](#)
- [Blocking Peptides](#)
- [Dot Blot](#)
- [Immunohistochemistry](#)
- [Immunofluorescence](#)
- [Immunoprecipitation](#)
- [Flow Cytometry](#)
- [Cell Culture](#)

Goat Anti-ADAM12 Antibody - Images

AF1025a (3.8 µg/ml) staining of paraffin embedded Human Prostate. Steamed antigen retrieval with citrate buffer pH 6, AP-staining.



AF1025a staining (0.1 µg/ml) of human heart lysate (RIPA buffer, 30 µg total protein per lane). Primary incubated for 1 hour. Detected by western blot using chemiluminescence.

Goat Anti-ADAM12 Antibody - Background

This gene encodes a member of the ADAM (a disintegrin and metalloprotease) protein family. Members of this family are membrane-anchored proteins structurally related to snake venom disintegrins, and have been implicated in a variety of biological processes involving cell-cell and cell-matrix interactions, including fertilization, muscle development, and neurogenesis. This gene has two alternatively spliced transcripts: a shorter secreted form and a longer membrane-bound form. The shorter form is found to stimulate myogenesis.

Goat Anti-ADAM12 Antibody - References

ADAM12 is an effective marker in the second trimester of pregnancy for prenatal screening of Down syndrome. Wang M, et al. Prenat Diagn, 2010 Jun. PMID 20509157. ADAM-12 stability in first trimester maternal serum. Cowans NJ, et al. Prenat Diagn, 2010 Jun. PMID 20509156. The role of SnoN in transforming growth factor beta1-induced expression of metalloprotease-disintegrin ADAM12. Solomon E, et al. J Biol Chem, 2010 Jul 16. PMID 20457602. Personalized smoking cessation: interactions between nicotine dose, dependence and quit-success genotype score. Rose JE, et al. Mol Med, 2010 Jul-Aug. PMID 20379614. Reduced density of ADAM 12-immunoreactive oligodendrocytes in the anterior cingulate white matter of patients with schizophrenia. Farkas N, et al. World J Biol Psychiatry, 2010 Apr. PMID 20218926.

Goat Anti-ADAM12 Antibody - Citations

- [Expression of ADAM12 is regulated by E2F1 in small cell lung cancer.](#)